



MISCOE SPRINGS



HABITECH
COMMUNITIES

WE'LL SHOW YOU THE WAY HOME

THE MODIFIED EXP. ESSEX

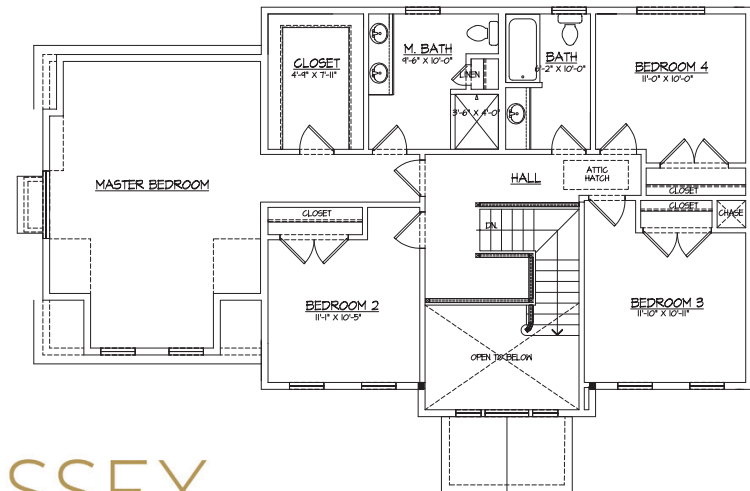
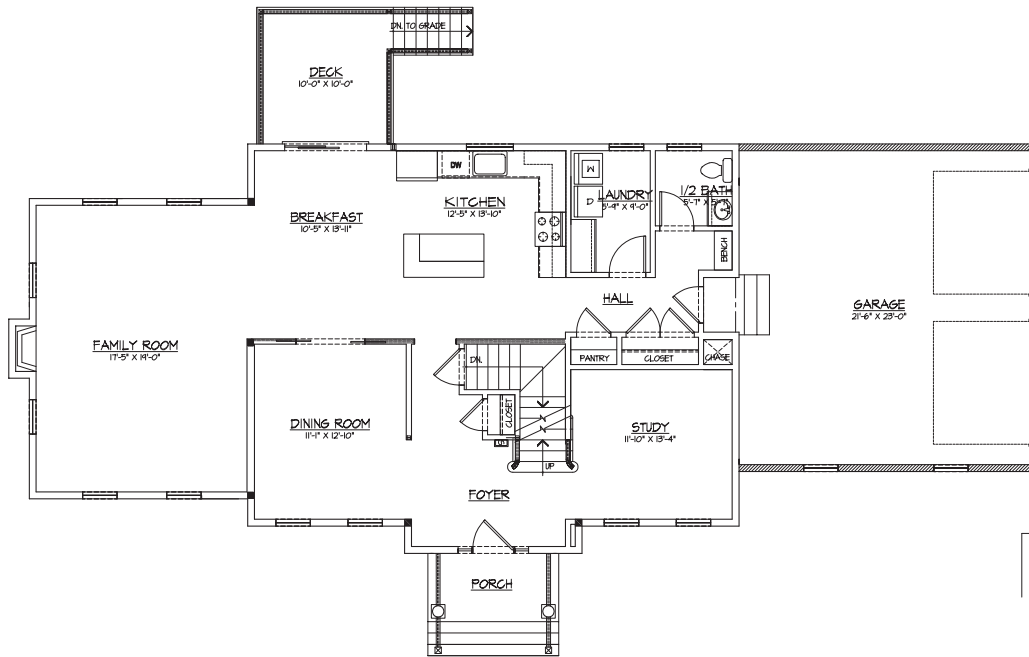
2,745^{SF} • 4 BEDROOMS • 2.5 BATHS • 2 CAR GARAGE

MISCOESPRINGS.COM

508.478.3300 



MISCOE SPRINGS



THE MODIFIED EXP. ESSEX

2,745sf • 4 BEDROOMS • 2.5 BATHS • 2 CAR GARAGE

This handout is for marketing purposes only. Floorplans, square footage, dimensions, specifications, materials, etc. are estimates only; actual construction may vary according to elevation, construction variance, availability of materials, and/or mechanical or structural requirements; and do not take into account finishes and options selected. Floorplans, square footage, dimensions, specifications, materials, and availability of homes are subject to change at any time without further notice or obligation.

© 2021 Miscoe Springs & Habitech Communities - Updated 010620 Plan ANR 79. Sales by Gary Smith, Mendon Area Real Estate

MISCOESPRINGS.COM

508.478.3300