



MISCOE SPRINGS




HABITECH
COMMUNITIES

WE'LL SHOW YOU THE WAY HOME

THE EXPANDED ESSEX I

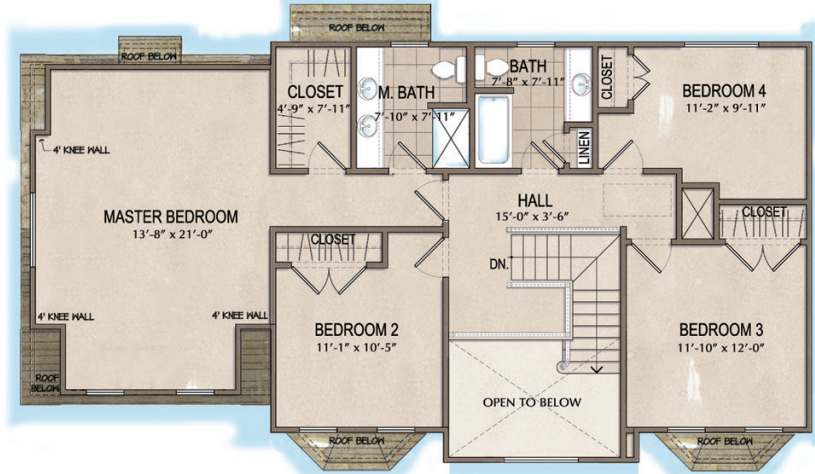
2,648sf • 4 BEDROOMS • 2.5 BATHS • 2 CAR GARAGE UNDER

MISCOESPRINGS.COM

508.478.3300 



MISCOE SPRINGS



THE EXPANDED ESSEX I

2,648_{SF} • 4 BEDROOMS • 2.5 BATHS • 2 CAR GARAGE UNDER

This handout is for marketing purposes only. Floorplans, square footage, dimensions, specifications, materials, etc. are estimates only; actual construction may vary according to elevation, construction variance, availability of materials, and/or mechanical or structural requirements; and do not take into account finishes and options selected. Floorplans, square footage, dimensions, specifications, materials, and availability of homes are subject to change at any time without further notice or obligation.

© 2021 Miscoe Springs & Habitech Communities, Plan 3 - Updated 12/10/19. Sales by Gary Smith, Mendon Area Real Estate

MISCOESPRINGS.COM

508.478.3300